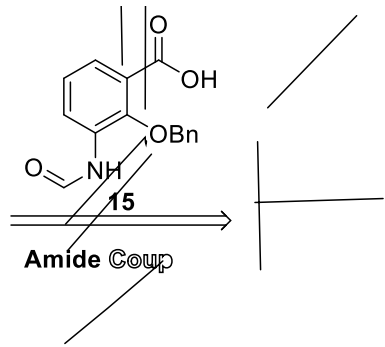
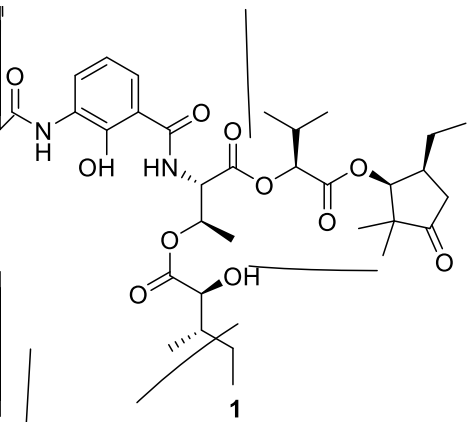


Streptomyces fradiae



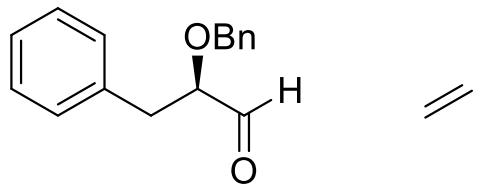
Amide Coup

Handwritten scribbles and lines on the left side of the page.

Handwritten lines and scribbles below structure 15.

Handwritten lines and scribbles in the middle of the page.

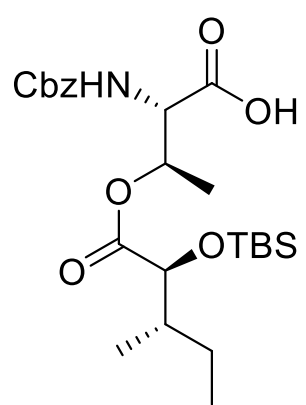
Handwritten lines and scribbles on the right side of the page.



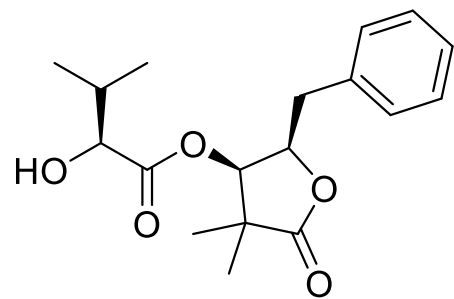
Mukaiyama Aldol

Deprotection





11



7

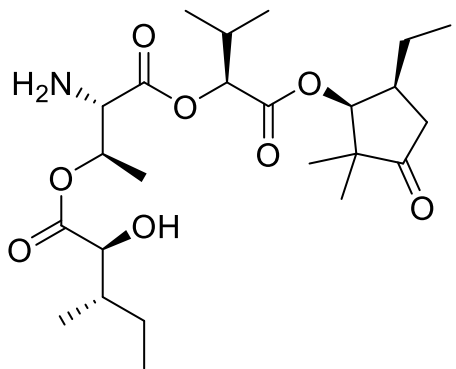
EDCI



12

12

TBS



14

