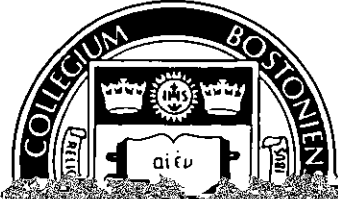


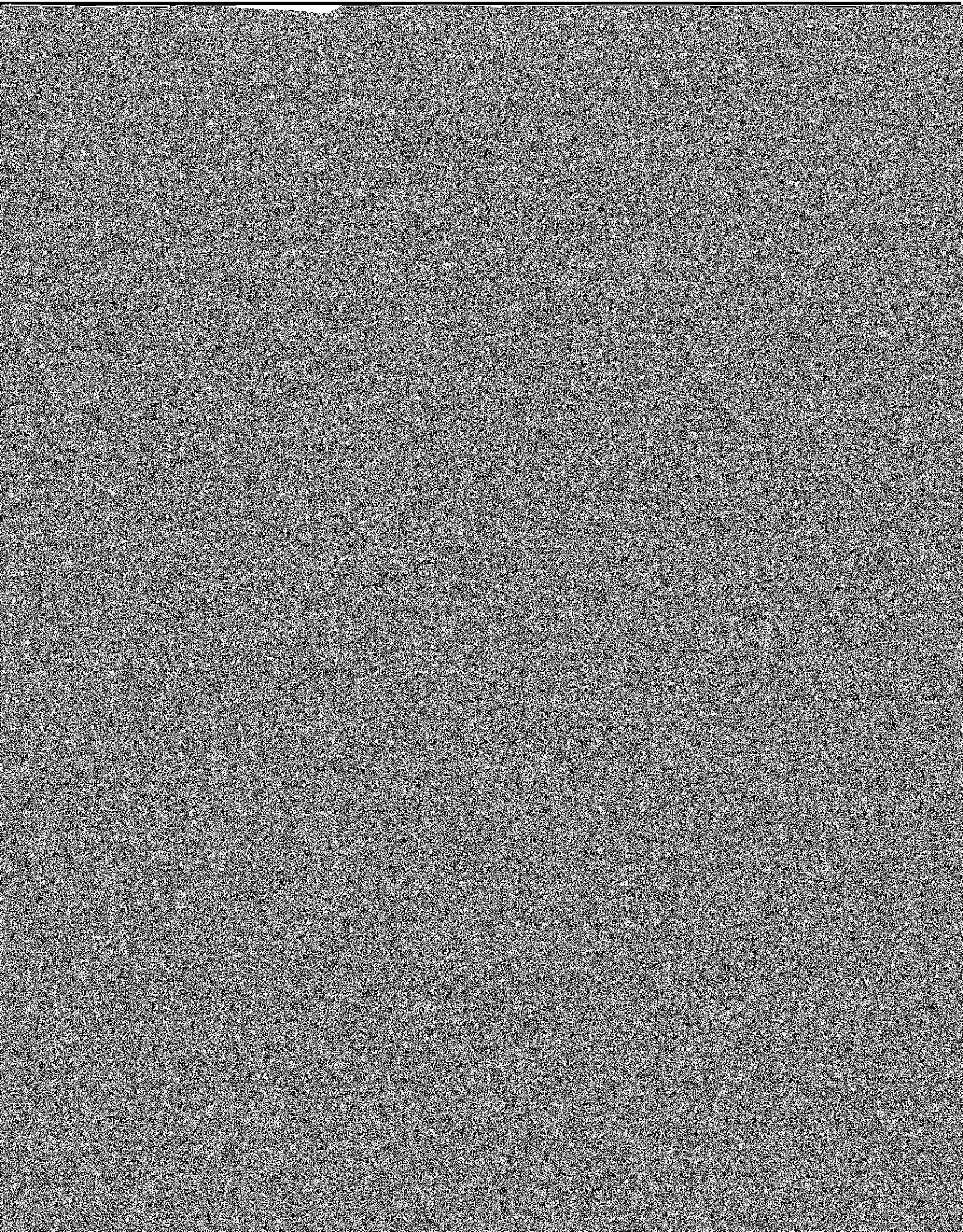
Boston College



BOARD OF TRUSTEE MEMBERSHIP†
1982-83

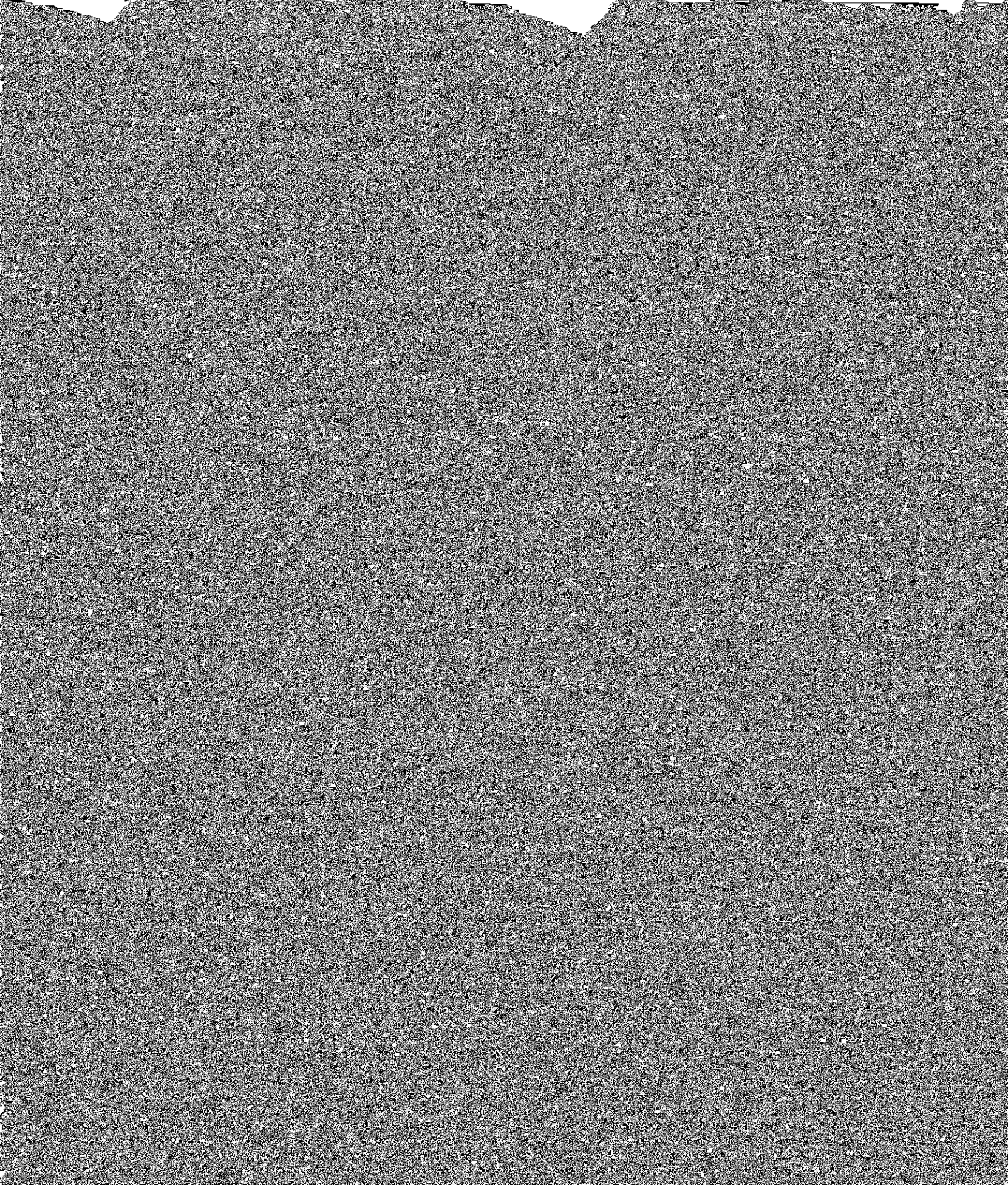
Josiah C. Abels, Jr. '50

Franz C. Meier, Sr. '53

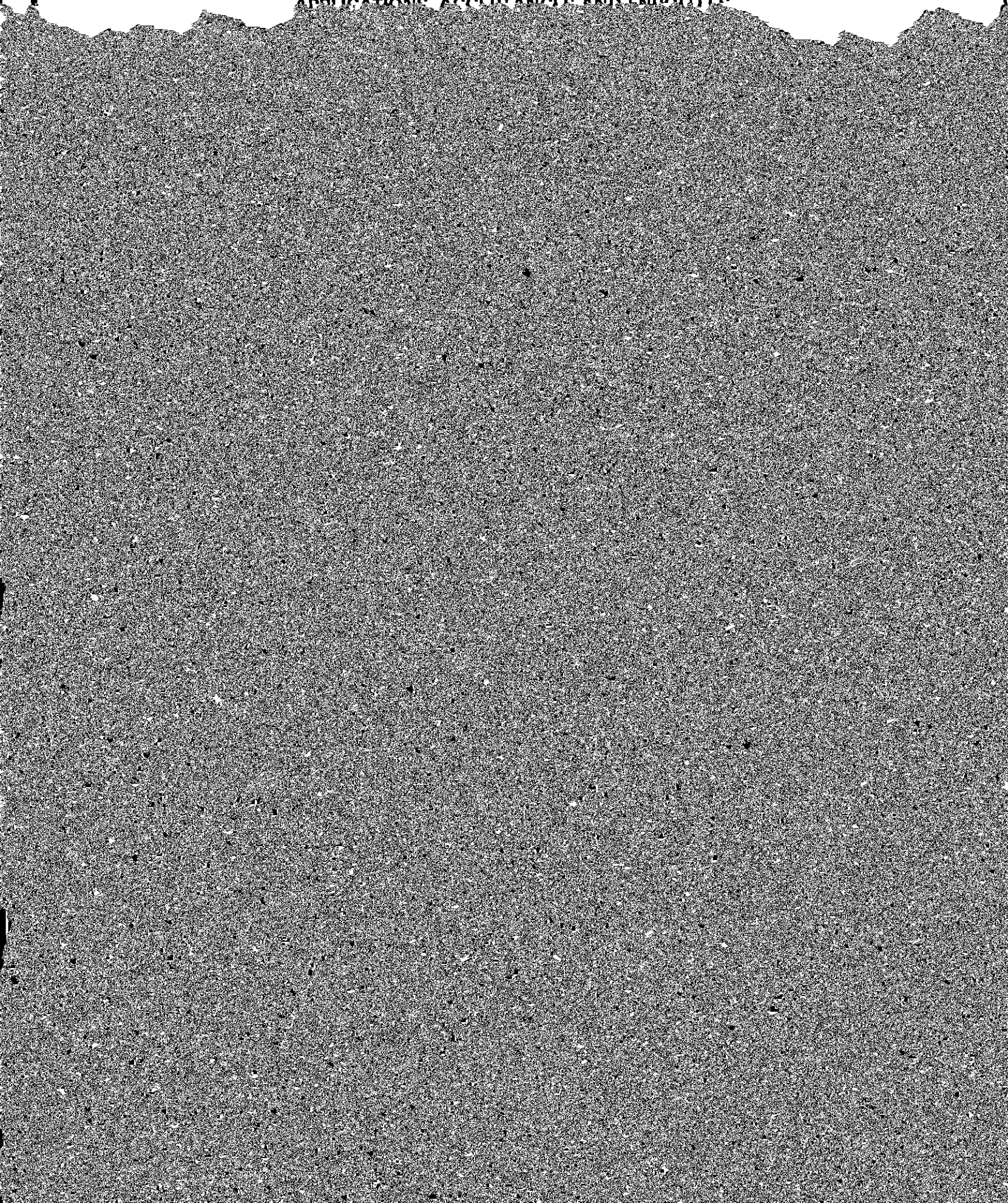


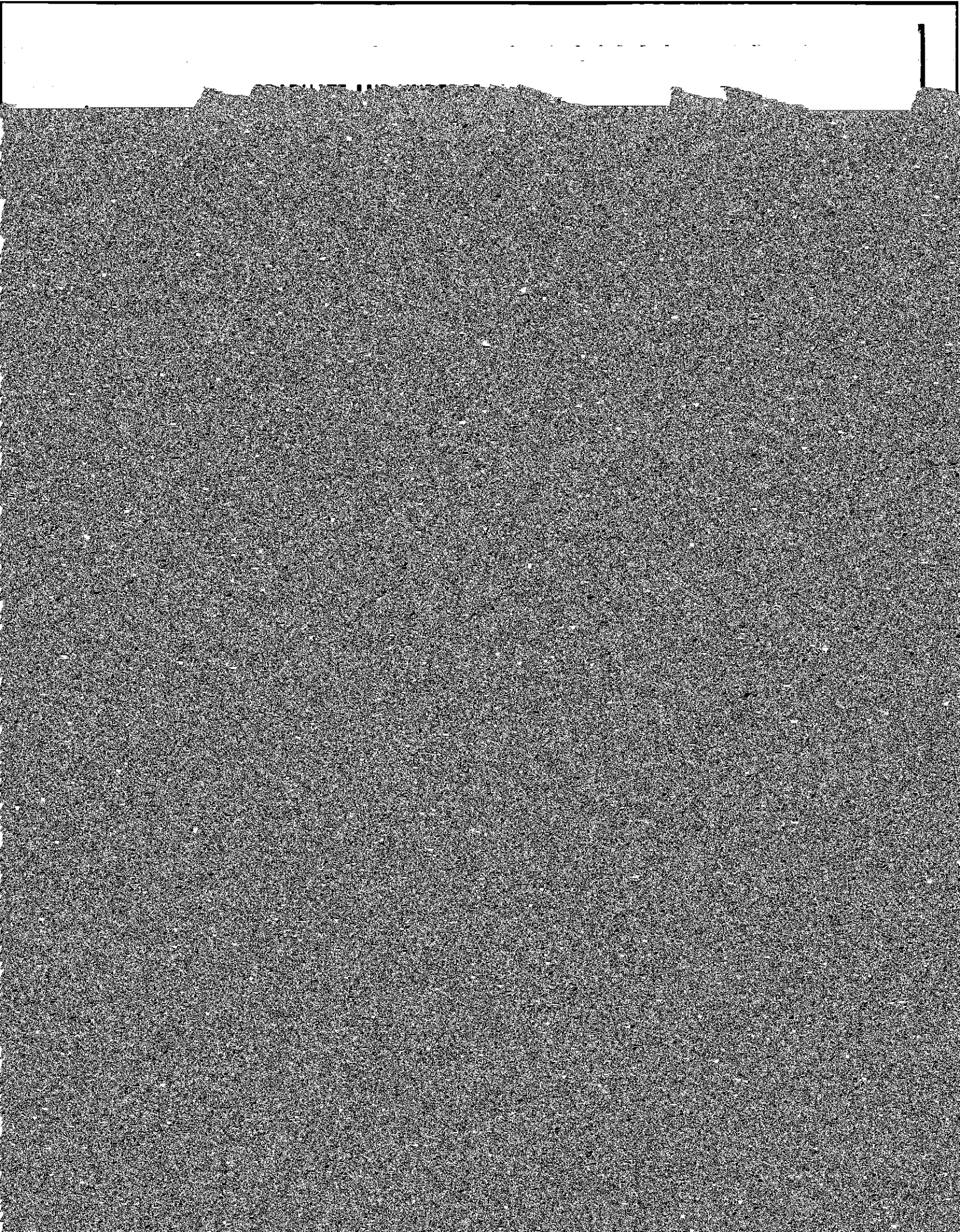
FULL-TIME FRESHMAN ENROLLMENT

FRESHMAN ENROLLEES



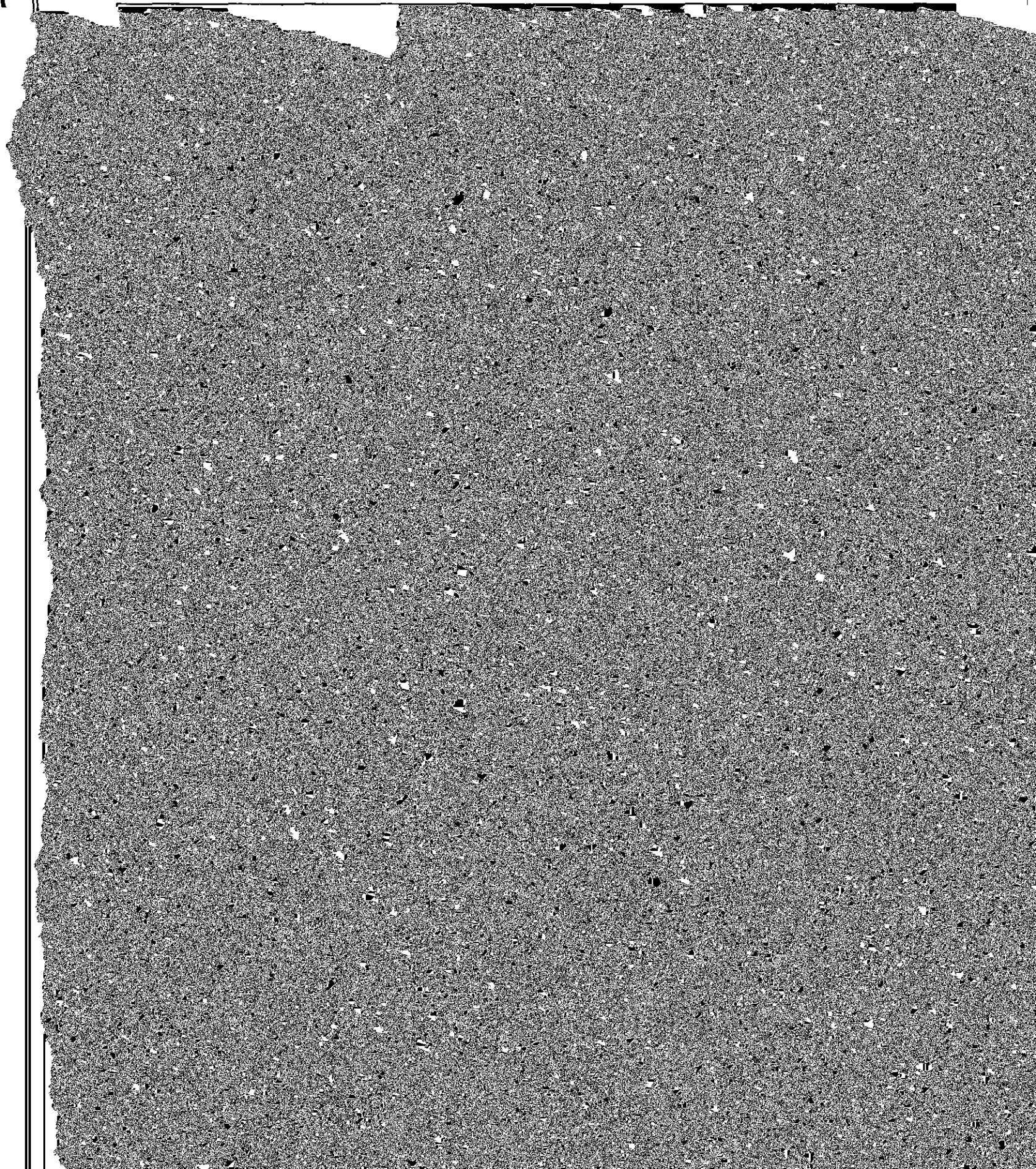
CLASS OF 1986
APPLICATIONS, ACCEPTANCES AND ENROLLERS





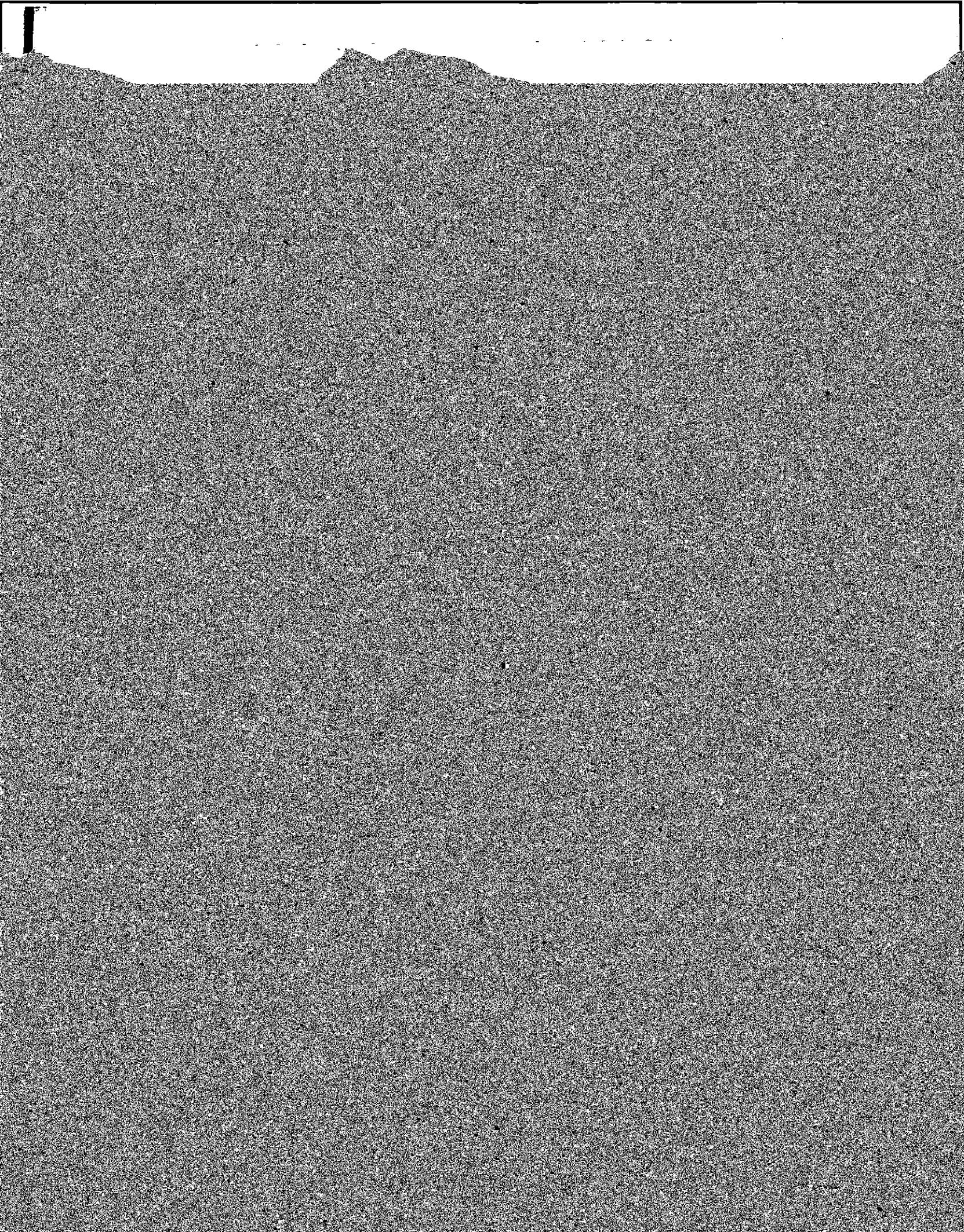
GRADUATE ENROLLMENT*
BY DEGREE PROGRAM AND DISCIPLINE

GEOGRAPHIC DISTRIBUTION OF STUDENTS*
(GRADUATE AND UNDERGRADUATE)
FALL 1981



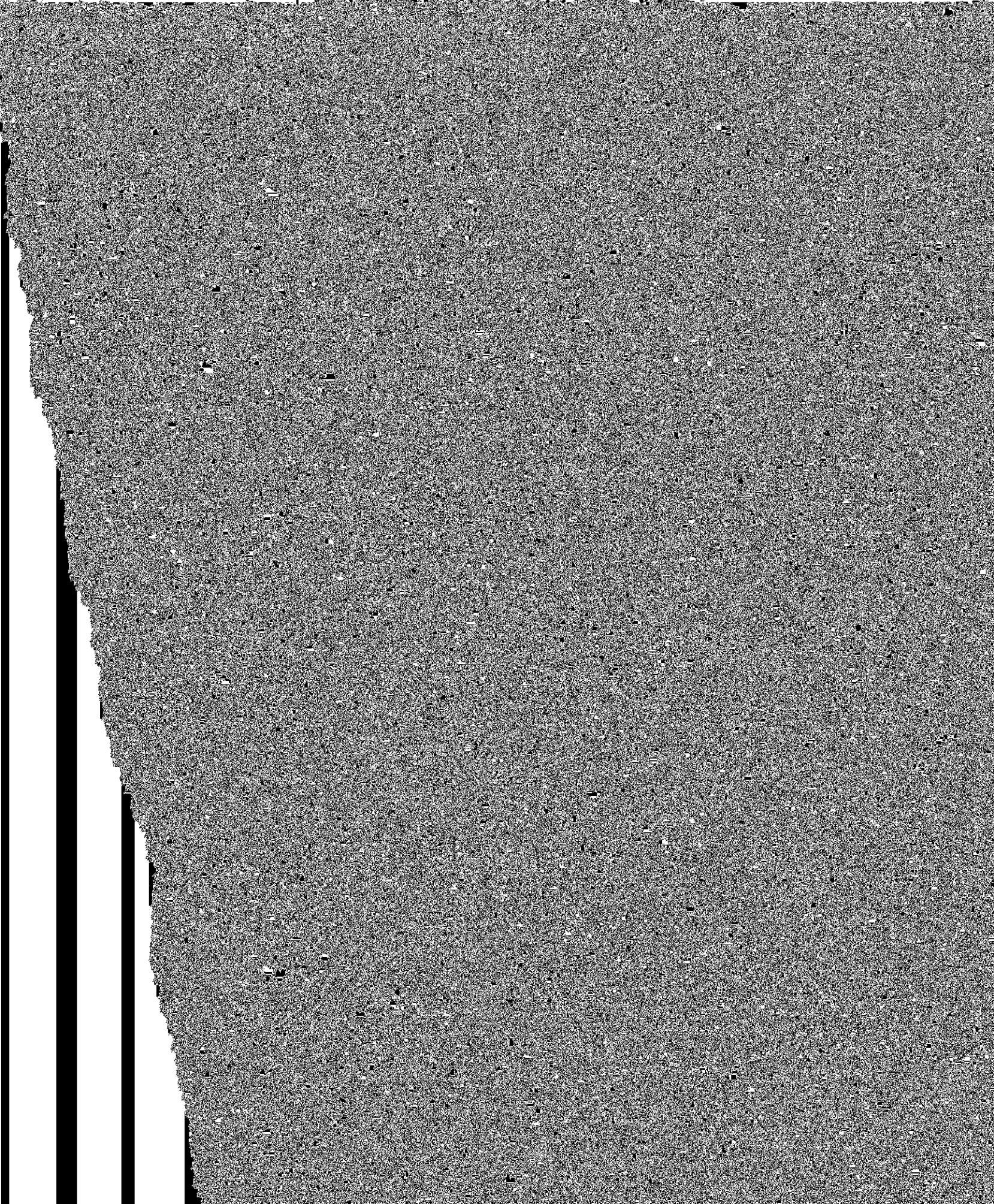
INTERNATIONAL STUDENT AND SCHOLAR ENROLLMENT
BY COUNTRY
FALL 1981

Argentina	4	Jordan	1
Australia	11	Kenya	2
Austria	1	Korea	4
Bangladesh	2	Kuwait	1
Barbados	1	Lebanon	3
Belgium	3	Lesotho	1



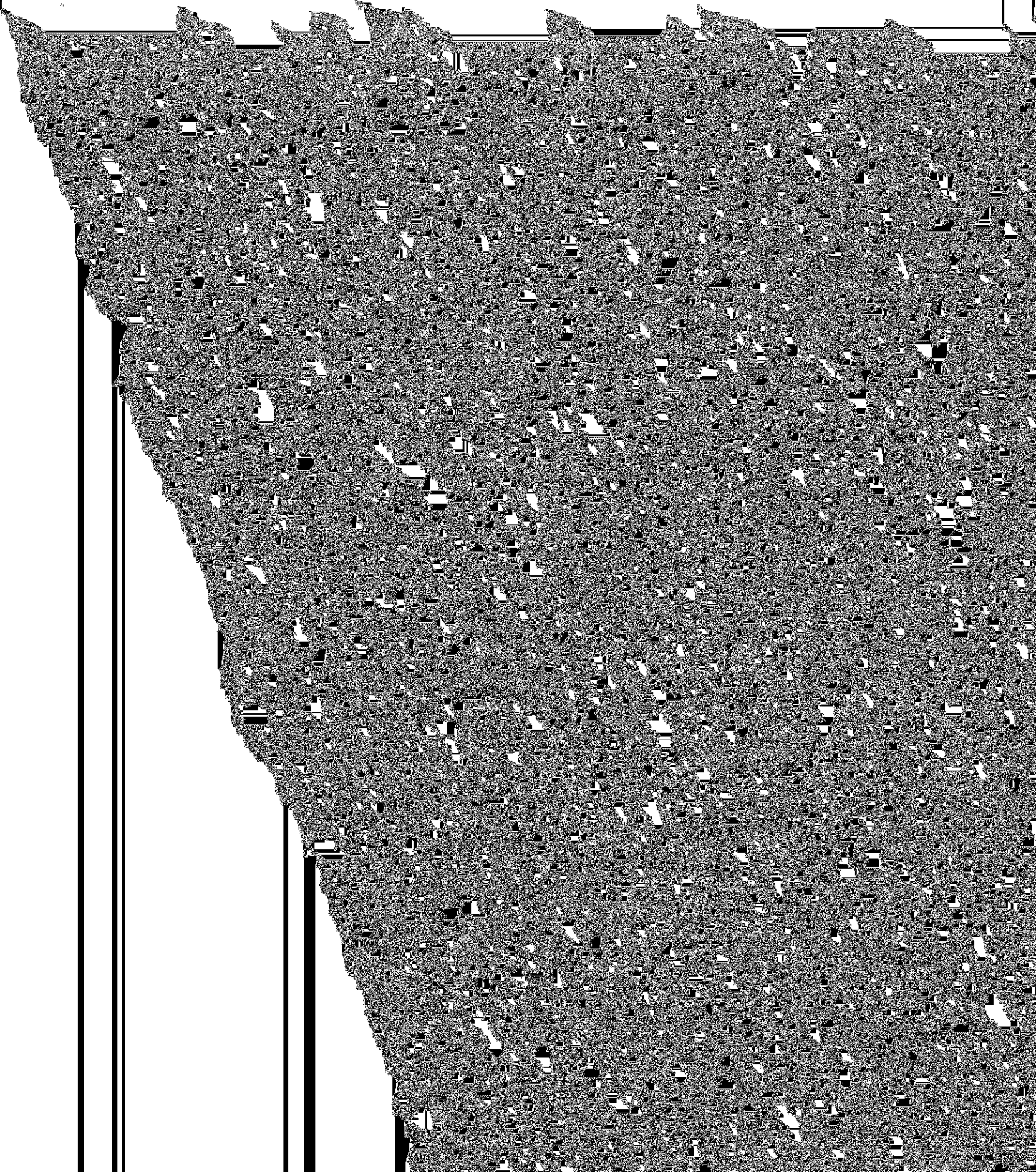


UNDERGRADUATE DEGREES CONFERRED



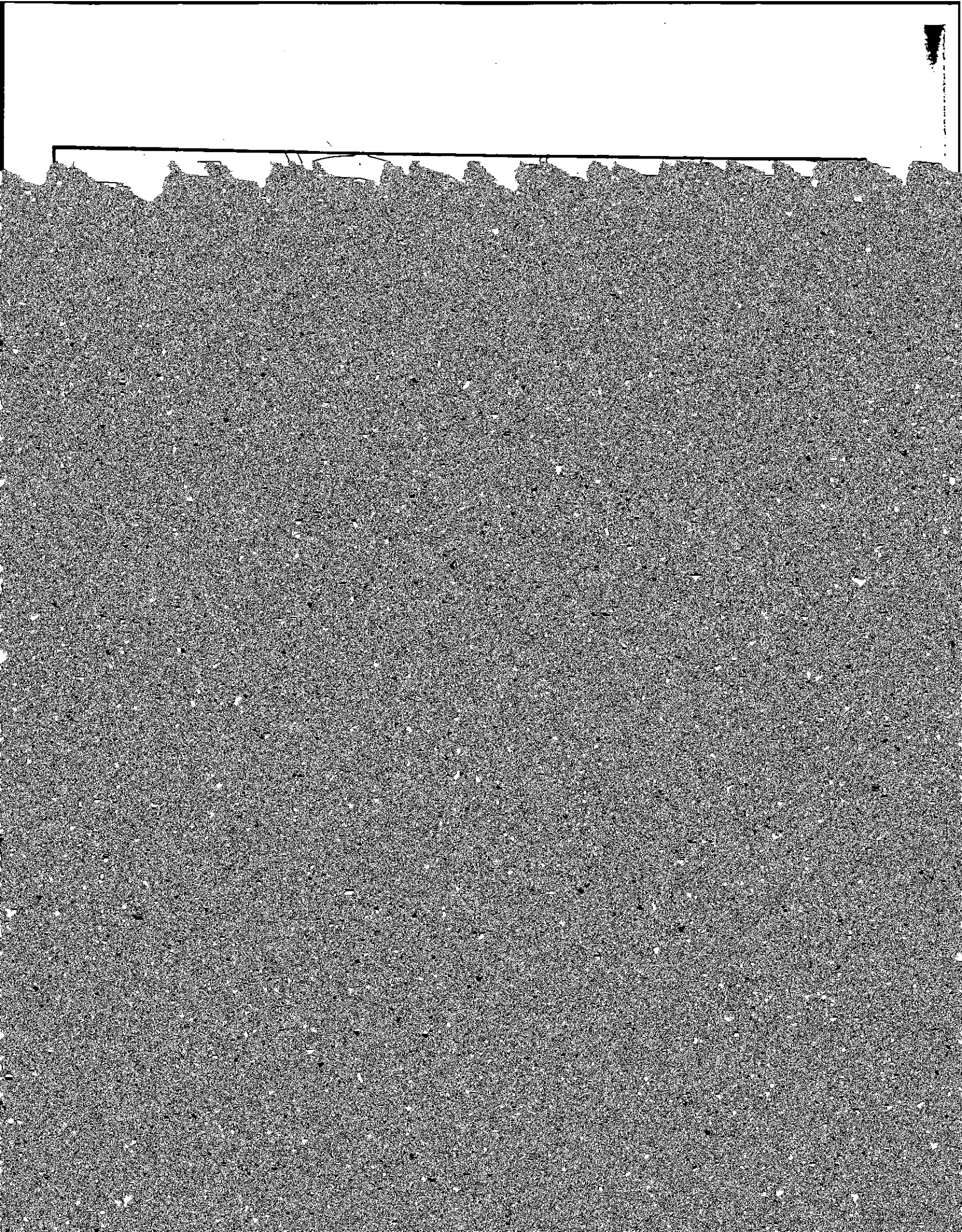
UNDERGRADUATE DEGREES CONFERRED

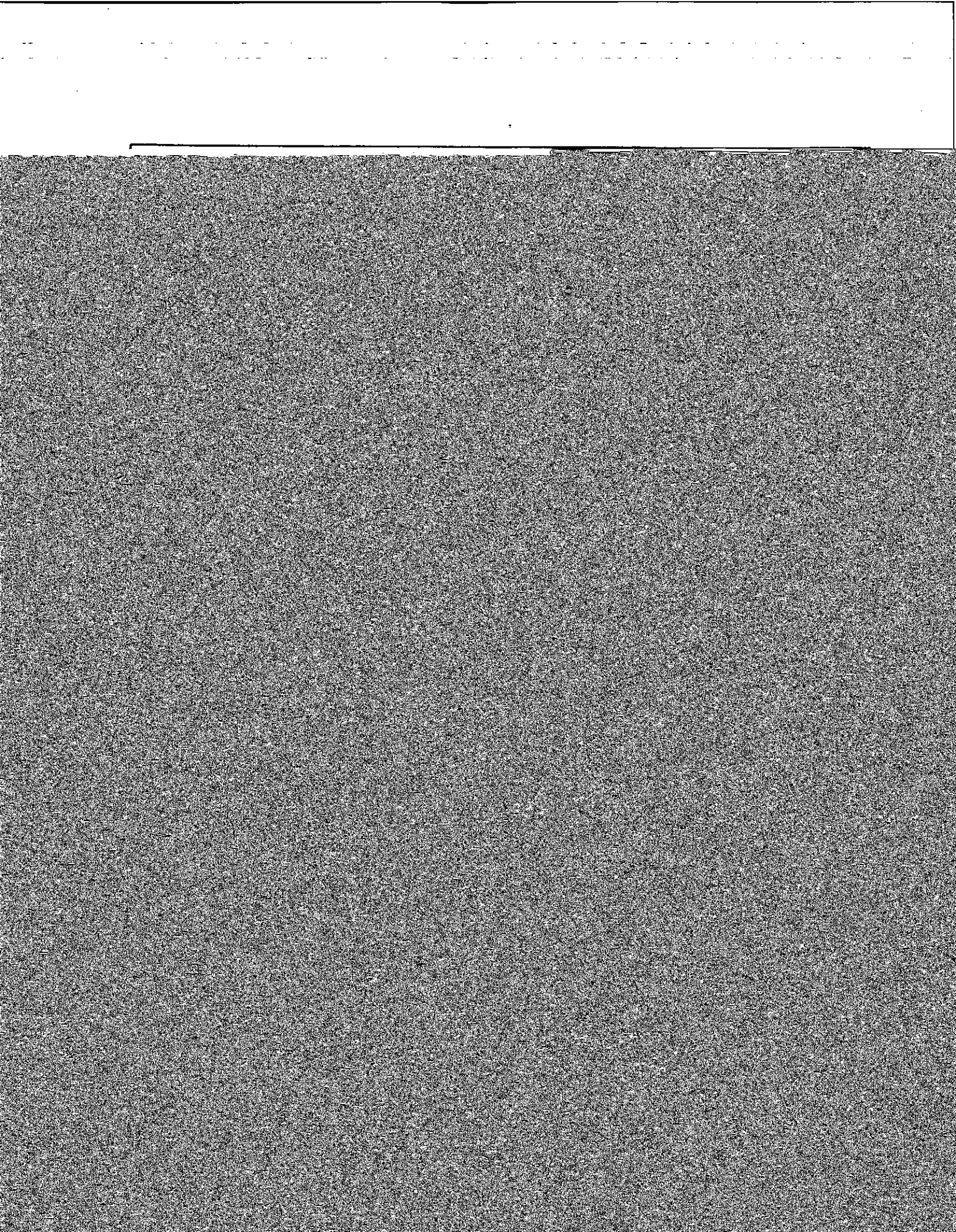
NOTES





BOSTON COLLEGE FUND





McElroy Commons³

Middle Campus

Students Services & Admin.

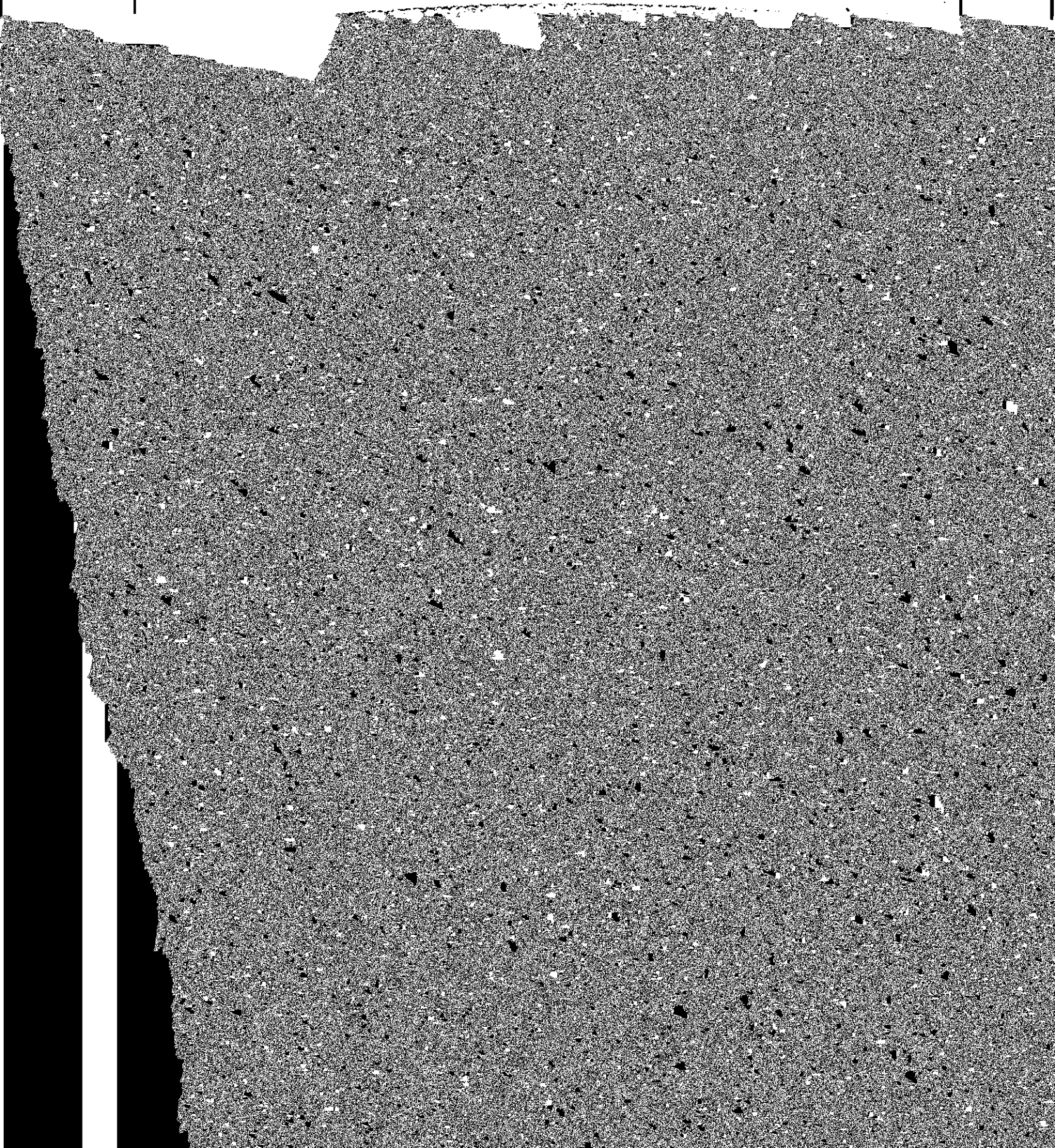
1955

RESIDENCE HALL CAPACITIES

1982-83

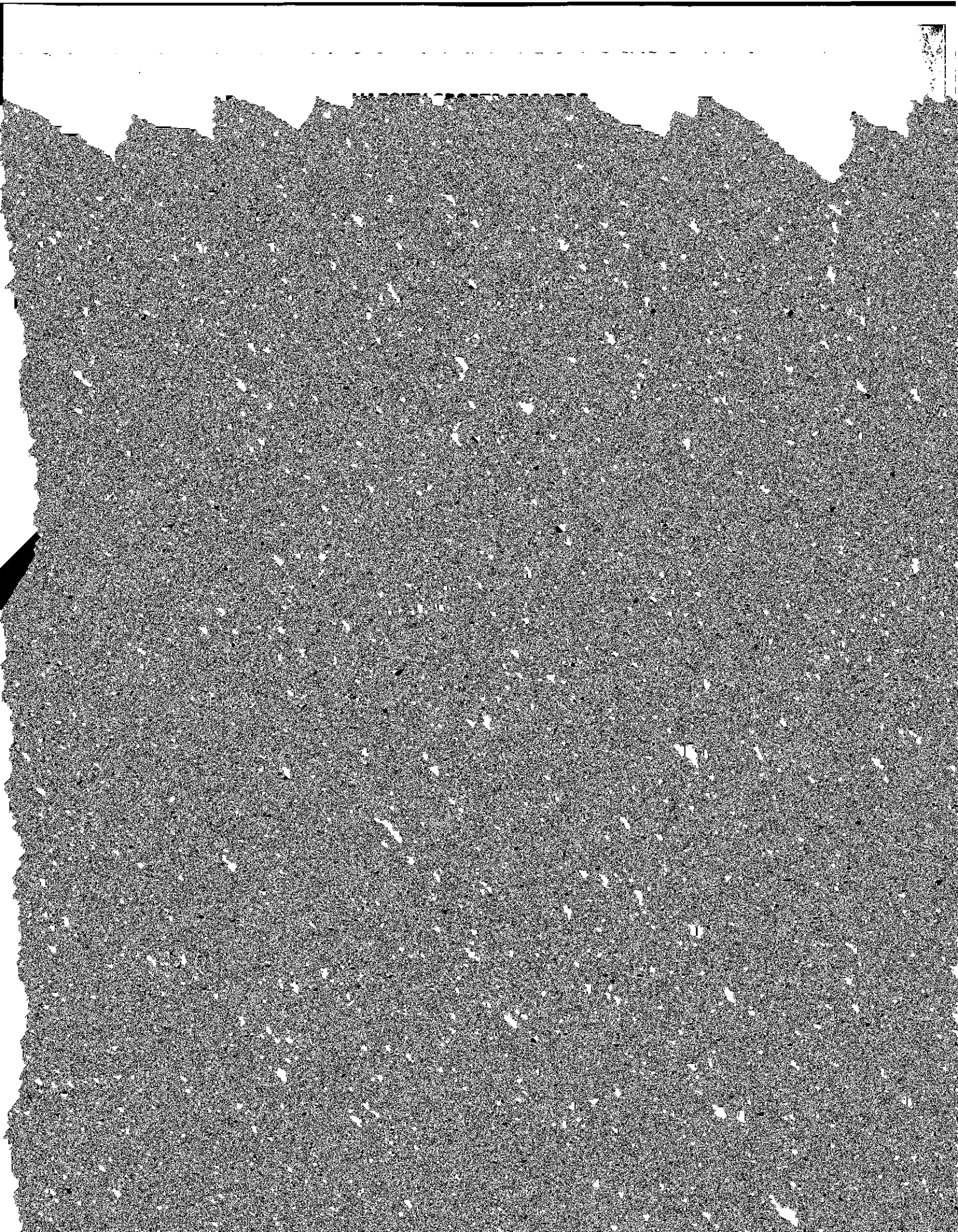
Students	Staff	Total					Living Units
CHESTNUT HILL							
Upper Campus							
135	3	138	Cheverus	127 Hammond Street			68
75	3	78	Claver	40 Tudor Road			40
142	3	145	Fenwick	46 Tudor Road			74
Lower Campus							
206		792	Edmond's Hall	200 St. Thomas More Drive			
36		210	Hillside A	100 Commonwealth Avenue			
29		152	Hillside B	100 Commonwealth Avenue			
86		498	Moduirs	90 Commonwealth Avenue			
144		794	Michael P. Walsh Hall				
174		177	Rubenstein Hall				
NEWTON CAMPUS							
116		123	Duchesne East	885 Centre Street			
64		135	Duchesne West	885 Centre Street			
72		131	Keyes North	885 Centre Street			

FINANCE



NOTES

NOTES



NOTES

1978

1980

Bruno Bettelheim, Litt.D.

Germaine Bree, Litt.D.*

